

VIOFO



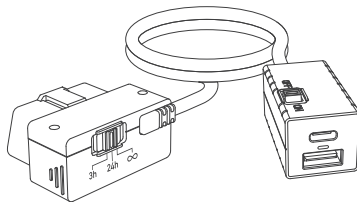
Scan to Access User Guide Videos



Scan to Access User Manual

USER MANUAL

OBD-II Constant Power Cable (OP100)



V26.01.26

Copyright©2025 VIOFO Ltd. All Rights Reserved.

WARNING

Ensure OP100 installation does not obstruct the driver's view, or interfere with the safe operation of the vehicle. Improper installation could result in an accident causing injury, or death.

CAUTION

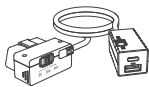
1. Refer to vehicle warranty, and owners manual on whether any OBD-II device might void, or alter warranty. VIOFO is not responsible for any costs, repairs, or voided warranties.
2. Verify OP100 is compatible with your vehicle. Using an incompatible device may result in malfunctions with vehicle diagnostic system.
3. Do not use OP100 if it affects vehicle engine performance. If you notice any change, disconnect it immediately, and contact VIOFO support.

Table of Contents

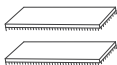
1. Packing List	01
2. Specifications	01
3. Installation	02
4. How to Use	05
Power Switch	05
Parking Recording Time Switch	05
Additional Function	06
5. Indicator	07
6. Customer Service	08

Packing List

Standard Items



OBD-II Power Cable x 1



Redosable Fasteners x 2

Optional Accessories (Sold Separately)



USB-A to Type-C Cable x 1



USB-A to Mini-USB Cable x 1

Specifications

Operating temperature: -10 to 50°C (14 to 122°F)

Input: Supports 12V & 24V Systems

Output: USB-A: 5V 3A

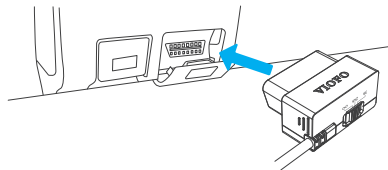
 Type-C: 5V 3A / 9V 2A / 12V 1.5A

Low battery protection voltage: 12V/24V

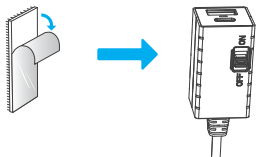
Note: Activation of low battery protection is determined by vehicle battery voltage. For passenger car & light truck 12V systems, low battery protection activates when OP100 receives less than 12V. For heavy duty & commercial 24V systems, low battery protection activates when OP100 receives less than 24V.

Installation

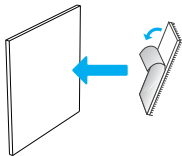
1. Connect OP100 to vehicle OBD-II port.
Vehicle OBD-II ports are typically located under the dashboard on the driver's side. Exact location may vary, see vehicle owner's manual for more information.



2. Remove the protective film from one reclosable fastener, and press the reclosable fastener firmly onto the side of the power adapter for 10 seconds.

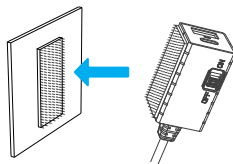


3. Clean the vehicle mounting surface with water or alcohol, and a lint-free cloth.
4. Allow the surface to dry completely.
5. Remove the protective film from a second reclosable fastener, and press it firmly onto the vehicle mounting surface for 10 seconds.

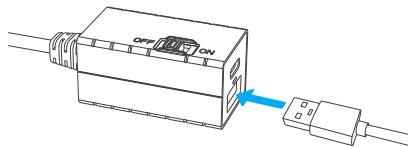


- 03 -

6. Attach the power adapter by pressing its reclosable fastener onto the fastener on the mounting surface.



7. Connect the USB cable from your VIOFO dash cam to the USB-A port on the power adapter.



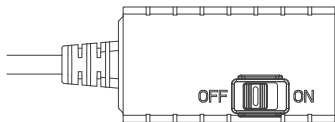
Note: The Type-C port is used for powering cell phones and other electronic devices.

- 04 -

How to Use

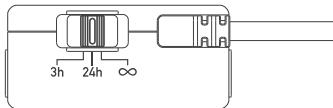
Power Switch

ON	Power on
OFF	Power off



Parking Recording Time Switch

The time switch sets the length of time the device supplies power in parking mode.



3h	3 hours
24h	24 hours
∞	Always on

Note:

1. The device automatically stops supplying power when the time is up, or the battery is low.
2. The device restarts the power supply for 200 seconds upon detecting an impact. It also powers on when the vehicle is restarted.

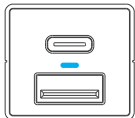
Additional Function

The OBD-II power cable enables parking mode when it is connected with our optional cable accessory equipped with ACC detection, allowing the dash cam to record video in parking mode while the vehicle is turned off.

Note: If using the original power cable, the dash cam can enter parking mode after detecting no motion for five minutes.







Indicator

The LED shows the device status.



LED Status	Device Status
Blue	The device is supplying power.
Off	The power switch is off. The device is not supplying power.
	The input voltage is less than 12V/24V. The low battery protection feature turns off the device to protect the vehicle battery.

Customer Service

-  12-month limited warranty
-  Lifetime technical support
-  support@viofo.com
-  www.facebook.com/viofo
-  +1 323 505 9898 (USA)
+1 323 609 9898 (Global)
-  Mon-Fri 9am-6pm



Scan the QR code to submit a ticket